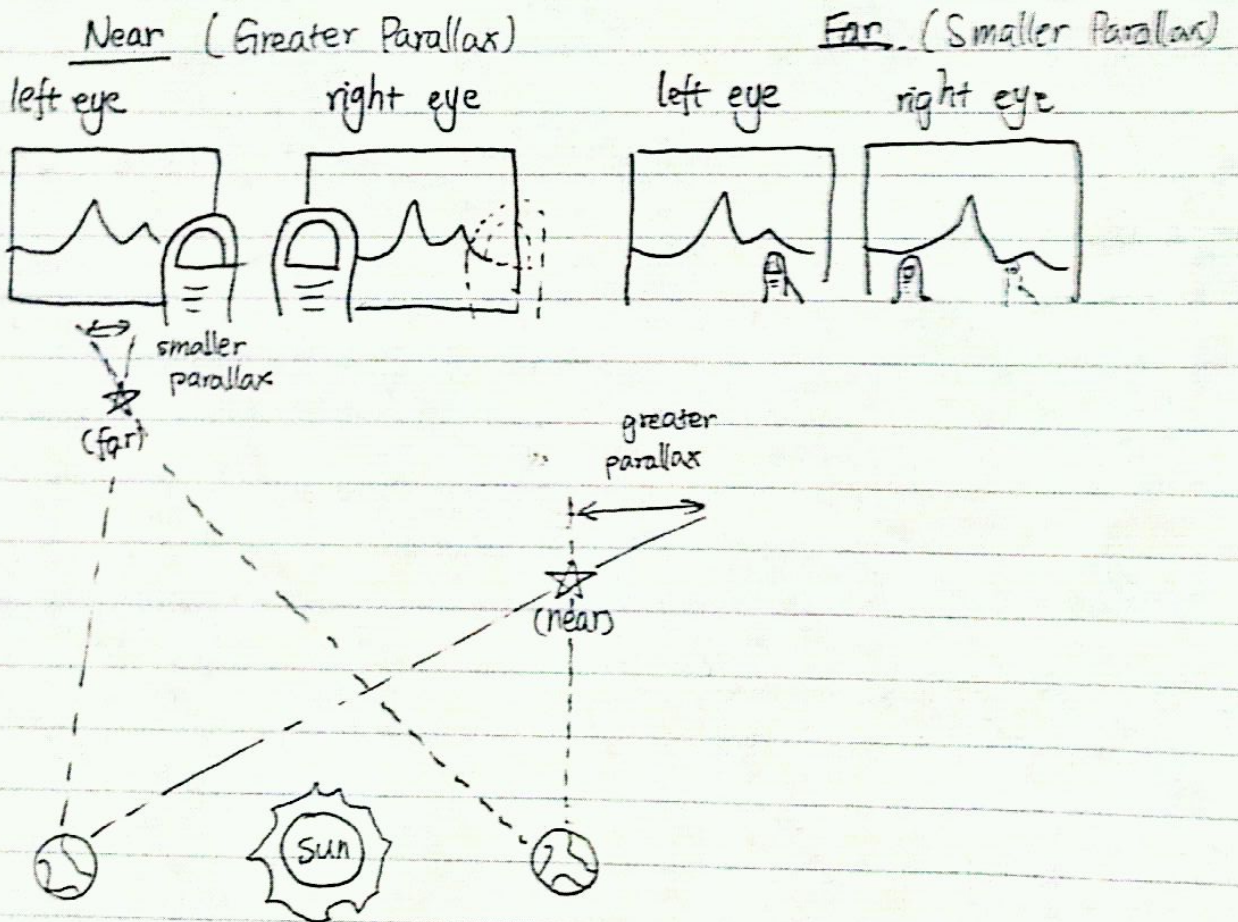


Jesse Hua

PARALLAX

Def: The apparent shift in position of an object when viewed from 2 different points.

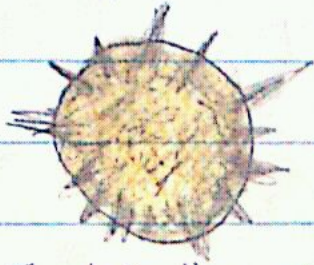
The nearer an obj. is, the greater the parallax



Big Bang Theory By Jerry / Curtis Kwan

- states that the universe started 13.7 billion years ago with an explosion
- expands everywhere at the same time

1.



- pictures of galaxies taken can also mean the past (doesn't mean how it actually looks when you take the picture because it even takes a long time for light to get to the telescope)

In less than a second, universe grew from size of pinhead to 2000 times the size of Sun

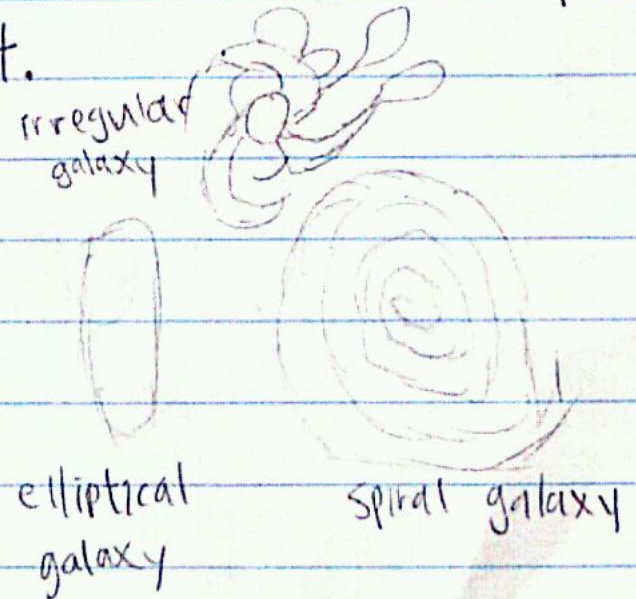
2.



3. Matter began collecting in clumps, and they form hydrogen and helium gases after they cool down



4.



Universe: one second old

Dense, opaque, swirling mass of elementary particles.

First stars were born one billion years after the explosion.

Objects in Space

I. Inner Planets

A. Mercury

- i. Closest planet to sun
- ii. No atmosphere

B. Venus

- i. Hottest Planet
- ii. High greenhouse effect.

C. Earth

- i. 10% water
- ii. Protective atmosphere.

D. Mars

- i. Red → Iron oxide surface
- ii. Ice caps.

II. Outer Planets

A. Jupiter

i. Largest planet

ii. High storms

B. Saturn

i. Complex rings

C. Uranus

i. Bluish → methane

ii. Vertical tilt

D. Neptune

i. Dark colored storms

III. Other Objects

A. Comets

i. Dust + Rock + Ice

ii. Coma, Nucleus, Tails

B. Meteoroids, rs, rites

i. Meteoroids - in space

ii. Meteors - Earth's atmosphere

iii. Meteorites - Hit Earth

C. Asteroids

i. In asteroid belt

ii. Thrown out by Jupiter's gravity

iii. Size vary from microscopic to 940 km diameter.